



SMT.INDIRA GANDHI COLLEGE OF ENGINEERING,NAVI MUMBAI

Inspiration, Innovation and Discovery.

Approved by AICTE, New Delhi and Affiliated to Mumbai University

Lead Zonal Partner of LeadingIndia.ai

AI NEWSLETTER

Vol. I, Issue I JAN 2019



ABOUT COLLEGE

SMT. INDIRA GANDHI COLLEGE OF ENGINEERING IS A CO-EDUCATIONAL ENGINEERING COLLEGE IN NAVI MUMBAI, MAHARASHTRA. ESTABLISHED IN 1993 RUN BY JAWAHARLAL NEHRU INSTITUTES OF EDUCATION SCIENCE AND TECHNOLOGICAL RESEARCH TRUST (NANDED-MAHARASHTRA). THE TRUST ALSO RUN OTHER 25 EDUCATIONAL INSTITUTES IN MAHARASHTRA STATE. THE INSTITUTE IS APPROVED BY ALL INDIA COUNCIL FOR TECHNICAL EDUCATION (AICTE), NEW DELHI AND GOVT. OF MAHARASHTRA, MUMBAI. THE INSTITUTION IS AFFILIATED TO THE MUMBAI UNIVERSITY, MAHARASHTRA.

The institution offers under-graduate courses in

B.E (ELECTRICAL ENGINEERING)
BE (ELECTRONICS AND
TELECOMMUNICATION)
BE (COMPUTER ENGINEERING,
BE (MECHANICAL ENGINEERING)

MR. SUNIL JADHAV

MANAGING DIRECTOR

MESSAGE FROM MANAGING DIRECTOR

It gives me an immense pleasure to welcome you to first newsletter of SIGCE Artificial Intelligence Club.

Industry Revolution 4.0

Today we are on the cusp of 4th Industrial revolution which essentially is based on smart, cyber physical system (Artificial Intelligence and Big Data Analytics). In the earlier industrial revolution, India never took a lead role in the earlier Industrial revolution and was enslaved for more that century. Any country who is left behind in this revolution will be enslaved permanently.

Leading India in AI

India, as a largest democracy has to lead the way in this revolution. With this in mind a consortium of academic institutes came together under the leadership of Royal Academy of Engineering, UK under Newton Bhabha Fund and approved a nation wide initiative on "AI and deep learning Skilling and Research". University college, London, Brunel University, London and Bennett University, India are collaborators of the project. NVIDIA and AWS Educate, Videoken and Edvantics are industry partners. We are proud to let you know that we are the Zonal leaders in this consortium. The vision is to equip faculty members and students with the industry-driven artificial intelligence and deep- learning tools As part of this initiative, we have tremendous amount of resources at our disposal, including world-class Supercomputing lab with NVIDIA DGX-1 V100 which is the fastest machine made by NVIDIA for Deep Learning. All 10,000 AICTE approved institutes and their intellectual powerhouse is at our disposal.

Leadership Role of Smt. Indira Gandhi College of Engineering

In coming days Artificial Intelligence and smart computing will be omnipresent. We need to harness the power of this technology and solve problems. With this in mind, at Smt. Indira Gandhi College of Engineering, not only we have taken a leadership role in AI and machine learning research, but also started Start-up incubation center to promote and use this technology for solving industry problems and promote entrepreneurship. I am also proud to announce that our industry out reach to understand real industry problems and provide solutions with AI and Machine learning has already started showing lots of progress and soon, in the true spirit of Industry-Academia collaboration, we will be providing solutions to the industries. Again, I welcome you all to take full advantage of this echo system we have created for Artificial Intelligence and Machine learning research and entrepreneurship and help India to become global leader in this Industrial revolution 4.0



DR. SUNIL S. CHAVAN

PRINCIPAL

MESSAGE FROM PRINCIPAL



It's our privilege to introduce our first Newsletter of Ai since Together we will bring a passion for teaching and learning we will make every effort o provide students with Ai activity that will stimulate their enthusiasm for life long learning. Our staff is a highly motivated group of professionals who are committed to growing and earing in Ai profession every month we dedicate staff meeting from time to time to the staff and discussion of current educational Ai research Ai is rapidly growing in the world, because of its various application in the various domain, such as health care, agriculture education, image processing etc. Because of this in upcoming years many of the jobs available in Ai we invite to other college and community members to become involved at our college for Ai research activity as our college for Ai research activity as our college is zonal head for (LeadingIndi.AI)there are many opportunities in college and out of college to participate and contribute to the earing experience ,Welcome your all suggestion, comments feedback which are there together we will make this year a rewarding and successful experience for all.

PROF. PATIL V. P.

VICE PRINCIPAL

MESSAGE FROM VICE PRINCIPAL



Our college is dedicated to student achievement and meeting the individual needs of all our students academically, socially, emotionally and behaviourally. Considering the current requirements of technology for national developments through research and updating scientific aspects we have started artificial intelligence club of students through which students are actively participating and contributing in this field.

The prediction of the usage of artificial intelligence is vast. this is a common topic both in science fiction and projections about the future society and technology. Some believe that since these could be replaced for various tasks no matter what, science has always progressed and explored various sectors, the artificial intelligence is one sector that has great potential and could mark a history to scientific studies in the future. artificial intelligence(AI) is the simulation of human intelligence by machines. In other words, it is the method by which machines demonstrate certain aspects of human intelligence like learning, reasoning and self- correction. For exploring the activities of artificial intelligence, we are publishing this newsletter. I assure that through this activity, everyone will get benefit for updating scope of artificial intelligence in every field. Our college is zonal leader of leading india.ai which is functioning through BENNETT UNIVERSITY (times of India group), Noida, India. We are working with activities like research, development, skilling and outreach for promoting and developing AI related projects.

THE FOLKS BEHIND OUR AI CLUB



MR. SUNIL JADHAV

Managing Director
AI Member



DR. SUNIL .S.CHAVAN

Principal, SIGCE
AI Member



PROF. V.P. PATIL

Vice Principal, SIGCE
AI Lead Person



MRS. SARITA BOPALKAR

Asstistant Professor
AI Development Activity
Co-ordinator



MR.UMAKANT GOHATRE

Asstistant Professor
AI Research Activity
Co-ordinator



MR.CHETAN PATIL

Asstistant Professor
AI Outreach Activity
Co-ordinator

NEWSLETTER EDITORIAL COMMITTEE



Mr. V.P. Patil

Chief Editor



Mr. Chetan Patil

Editor

Mrs. Rajashree Pachpande

Co. Editor



Omkar Chavan

Student Member



Ankit Kotharkar

Student Member



MISS. HEMANGI NALE

Ambassador
AI Club



MR. HRUSHIKESH SHUKLA

Ambassador
AI Club



MR. ANIL CHOUDHARY

Jt. Ambassador
AI Club

AMBASSADORS OF AI CLUB



MR. SHAMSUNDHAR VAISHYA

Jt. Ambassador
AI Club



MR. ANIKET CHAUHAN

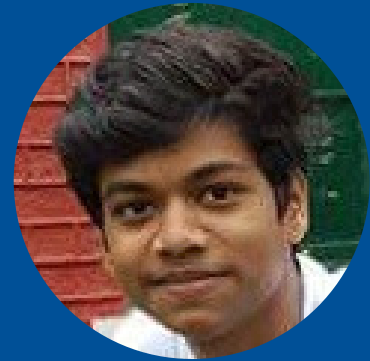
Jt. Ambassador
AI Club



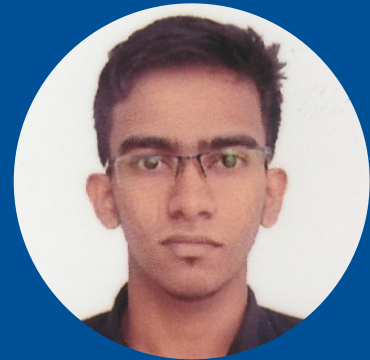
MISS. DAKSHATA SANAS

Jt. Ambassador
AI Club

AI CLUB'S EXECUTIVE MEMBERS



MR. TANMAY PACHPANDE



MR. IMAD MUJAWAR



MISS. PRIYANKA GHODKE



MISS. PRAJAKTA JADHAV



MISS. PRANALI UTTEKAR

MESSAGE FROM THE MEMBERS



MR. CHETAN PATIL

AI Outreach Activity
Co-ordinator

Artificial Intelligence rapidly growing among the world. Artificial Intelligence outreach activity provides platform for students to show skills in AI Research, AI development, AI skilling. I invite students to become a part of AI Outreach activity and shape your leadership quality.



MRS. SARITA BOPALKAR

AI Development Activity
Co-ordinator

As a part of leadingindia.ai we have key focus on development. Most critical component will be the product development. It needs to be taken with utmost sincerity and drive. This has the potential to change the overall outlook of the research group. The product should be workable and must be of the quality so that it can be released in the public domain and people start using it by the end of March 2020.

It can be a mobile app or a physical product usable by the potential customers on your chosen domain area under AI.

RESEARCH AREA OF ARTIFICIAL INTELLIGENCE

The modern definition of artificial intelligence (or AI) is "the study and design of intelligent agents" where an intelligent agent is a system that perceives its environment and takes actions which maximizes its chances of success. John McCarthy, who coined the term in 1956, defines it as "the science and engineering of making intelligent machines." Other names for the field have been proposed, such as computational intelligence, synthetic intelligence or computational rationality. The term artificial intelligence is also used to describe a property of machines or programs: the intelligence that the system demonstrates. AI research uses tools and insights from many fields, including computer science, psychology, philosophy, neuroscience, cognitive science, linguistics, operations research, economics, control theory, probability, optimization and logic.

AI research also overlaps with tasks such as robotics, control systems, scheduling, data mining, logistics, speech recognition, facial recognition and many others. Computational intelligence Computational intelligence involves iterative development or learning (e.g., parameter tuning in connectionist systems). Learning is based on empirical data and is associated with non-symbolic AI, scruffy AI and soft computing. Subjects in computational intelligence as defined by IEEE Computational Intelligence Society mainly include: Neural networks: trainable systems with very strong pattern recognition capabilities. Fuzzy systems: techniques for reasoning under uncertainty, have been widely used in modern industrial and consumer product control systems; capable of working with concepts such as 'hot', 'cold', 'warm' and 'boiling'.

Evolutionary computation: applies biologically inspired concepts such as populations, mutation and survival of the fittest to generate increasingly better solutions to the problem. These methods most notably divide into evolutionary algorithms (e.g., genetic algorithms) and swarm intelligence (e.g., ant algorithms). With hybrid intelligent systems, attempts are made to combine these two groups. Expert inference rules can be generated through neural network or production rules from statistical learning such as in ACT-R or CLARION. It is thought that the human brain uses multiple techniques to both formulate and cross-check results. The following are the some research area: Healthcare, Agriculture, Space Research and Satellite imagery, Education, Video Processing, Business, Insurance, Banking, Crime

Mr. Umakant Bhaskarrao Gohatre

Assistant Professor

Electronics and Telecommunication Engineering

Department

SMT. INDIRA GANDHI COLLEGE OF ENGINEERING

ARTIFICIAL INTELLIGENCE

SMT. INDIRA GANDHI COLLEGE OF ENGINEERING IS A ZONAL LEAD PARTNER OF WWW.LEADINGINDIA.AI OF BENNETT UNIVERSITY (TIMES OF INDIA GROUP) NOIDA, UP- INDIA.

WORLD IS ON THE CUSP OF A REVOLUTION ABOUT NEW POSSIBILITIES IN AI AND MACHINE LEARNING. DEEP LEARNING IS BEING USED TO SOLVE MANY CRITICAL HEALTH CARE RELATED ISSUES APART FROM OTHER IMPORTANT AREAS THAT IMPACT SOCIETY.

INDUSTRY ALL OVER THE WORLD IS FACING HUGE SCARCITY OF TRAINED MANPOWER IN MACHINE INTELLIGENCE. COMPANIES WORKING IN AUTONOMOUS VEHICULAR INDUSTRY, ADVANCED DATA SCIENCE, IMAGE PROCESSING, VIDEO ANALYTIC ARE SHORT OF TALENT. THE WHOLE SPECTRUM OF APPLICATIONS IMPORTANT FOR OUR PLANET ARE WAITING FOR NEW INNOVATIONS AND IDEAS DUE TO THIS NEWLY FOUND POTENTIAL AROUND DEEP LEARNING. THIS COLLABORATION WILL HELP BRING INDIA TO A PROMINENT PLACE IN THE FIELD OF AI MANPOWER AND RESEARCH SIGCE HAS COLLABORATED ON NATIONWIDE INITIATIVE ON "AI AND DEEP LEARNING SKILLING AND RESEARCH" AS ZONAL LEAD PARTNER.

THIS IS A CONSORTIUM OF VARIOUS LEADING INDUSTRIES AND UNIVERSITIES LIKE NVIDIA AND AWS EDUCATE, VIDEOKEN AND EDVANTICS WHICH ARE INDUSTRY PARTNERS AND UNIVERSITY COLLEGE, LONDON, BRUNEL UNIVERSITY, LONDON AND BENNETT UNIVERSITY, INDIA ARE UNIVERSITY COLLABORATORS

ARTIFICIAL INTELLIGENCE TODAY AND TOMORROW

- Swati A. Pandey,
Saniksha D. Kanse

As Artificial Intelligence has only in the recent year become apart of our day-to-day topic. We might tend to think it is a young concept, subsequent to recent discovery.

The pioneer of this discipline is a plan turning, a British mathematician and logician, that back in 1950 started advancing the idea that machine could be able to think. "We use Artificial Intelligence in day-to-day life"-Often without even realizing it. Artificial Intelligence algorithm analyze qualities of data that until now has been represented a big concern for human being, because it is very hard to examine in a fast and accurate way of avoiding major mistakes. For this reason, the finance industry is one of the fields that have been benefitting the most from the advance that has been accomplished in the discipline, and seems

```
351
352 /* =Menu
353 -----
354
#access {
  display: inline-block;
  height: 69px;
  float: right;
  margin: 11px 28px 0px 0px;
  font-size: 13px;
  text-align: right;
  vertical-align: middle;
  padding-left: 0;
  padding-right: 0;
  padding-top: 0;
  padding-bottom: 0;
  border: none;
  border-left: none;
  border-right: none;
  border-top: none;
  border-bottom: none;
  margin-left: 0;
  margin-right: 0;
  margin-top: 0;
  margin-bottom: 0;
  width: 99999px;
  height: 99999px;
  position: absolute;
  top: 0;
  left: 0;
  bottom: 0;
  right: 0;
  z-index: 99999;
}
```

to be full potential for greater achievements in the nearest future. Eg: AI will be playing a key role in other aspects of the financial reality: it will improve bank's customer service and conventional interface, it will strengthen data security and it will provide ever more accurate data analysis.

However, the technology is still in its infancy. What many companies are calling AI today aren't necessarily so. As engineering it is important that any piece of software has a due to algorithm that response based on pre-defined multifaceted input or user behaviour. Today, pseudo AI technology that are driving much of our voice and non-voice base interaction with the machines- the machine learning phases of the digital age. From voice-powered personal assistant like Siri and Alexa, to more underlying and fundamental technologies behavioral an algorithm, suggestive searches anal autonomously-powered self-driving vehicles boasting powerful predictive capabilities, there are several examples and applications of Artificial Intelligence in use today.

AI RESEARCH AREAS FOR FUTURE

Artificial intelligence (AI) has been a concept for decades, now finally getting close to making AI a reality. With breakthroughs in “machine learning,” using neural networks, AI can be exploited to next level. Few applications can be automated vehicles, robot workers and in healthcare. We researchers can explore GAN and synthetic datasets as emerging parts of artificial intelligence domain

Generative adversarial networks (GANs) are a class of artificial intelligence algorithms used in unsupervised machine learning, implemented by a system of two neural networks contesting with each other in a zero-sum game framework. They were introduced by Ian Goodfellow et al. in 2014. This technique can generate photographs that look at least superficially authentic to human observers, having many realistic characteristics (though in tests people can tell real from generated in many cases). Generative adversarial networks (GANs) are deep neural net architectures comprised of two nets, pitting one against the other (thus the “adversarial”). One network generates candidates (generative) and the other evaluates them (discriminative). Referring to GANs, Facebook’s AI research director Yann LeCun called adversarial training “the most interesting idea in the last 10 years in ML.”, GANs have been used to produce samples of photorealistic images for the purposes of visualizing new interior/industrial design, shoes, bags and clothing items or items for computer games' scenes. In a surreal turn, Christie’s sold a portrait for \$432,000 that had been generated by a GAN, based on open-source code written by Robbie Barrat of Stanford.

Synthetic data are commonly generated in order to validate mathematical models comparing the behaviors of the real data of those generated through the model. SYNTHIA, The Synthetic collection of Imagery and Annotations, is a dataset that has been generated with the purpose of aiding semantic segmentation and related scene understanding problems in the context of driving scenarios. SYNTHIA consists of a collection of photo-realistic frames rendered from a virtual city and comes with precise pixel-level semantic annotations.

Features:

- Large volume of data & groundtruth: +200,000 HD images from video streams and +20,000 HD images from independent snapshots
- Scene diversity: European style town, modern city, highway and green areas
- Variety of dynamic objects: cars, pedestrians and cyclists
- Multiple seasons: dedicated themes for winter, fall, spring and summer
- Lighting conditions and weather: dynamic lights and shadows, several day-time modes, rain mode and night mode
- Sensor simulation: 8 RGB cameras forming a binocular 360° camera, 8 depth sensors

- Dr.Rajesh H. Kulkarni

SCOPE OF ARTIFICIAL INTELLIGENCE

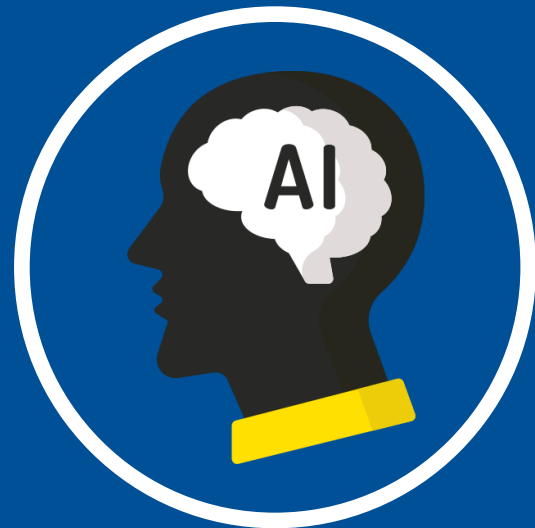
The man has created machines to assist a human being in all fields. Machines are made to follow given commands precisely. In arising conditions, machines can only follow a set of commands and cannot take actions by its own. With continuing efforts to achieve more, man is trying to make intelligent machines, which should not only follow the commands but also should be capable to think and take appropriate decisions like a human being.

Artificial Intelligence (AI) is a way of making a computer, a computer-controlled robot, or a software think intelligently, in a similar manner the intelligent humans think. Although it is believed that, with AI machines can behave in a similar manner the human behaves, it's worth mentioning here, that AI can serve better than a common human being in an area under consideration. As an example, not all farmers are equally intelligent in all their work! For efficient farming, various parameters are to be considered like the type of soil, type of crop, climate conditions, watering requirements, fertilizers etc. AI system built by combining inputs taken from experts of different sources can behave more efficiently than an individual common man. AI is applicable to all areas we come across in our day to day life and it will not only assist human functioning but can also perform more efficiently than human when programmed properly. AI is already deployed in many areas by today and will surely be an integral part of every application in near future.

-PROF. K T PATIL

HOD-COMPUTER ENGINEERING
DEPARTMENT.

START OF AI JOURNEY



-By Sarita Bopalkar
Assistant Professor
Research member(AI club)

‘LEADINGINDIA.AI ‘ WHAT DOES THIS MEAN TO YOU?

Leading India in the field of Artificial Intelligence. And who is leading? the engineers like us ...

It's really great opportunity created by Dr. Deepak Garg to work in the field of Artificial Intelligence. I

am very much thankful to our trustee Mr. Sunil Jadhav and our vice principal Mr. Patil V.P. for sponsoring us as the Zonal Leader. Now Smt. Indira Gandhi Collage of Engineering, Ghansoli carries responsibility on it's shoulder to spread awareness of AI in our zone.

Before this, I had heard about google home, Alexa, recent smart phones, TV having AI technology. I was very much curious about all these things. Then I started thinking about the technology behind this. For that the first step is to gain the knowledge in this field. Different resources are made available on leadingindia.ai site like online courses edx, Coursera which includes courses from different universities.

We were pleasantly surprised to see the great amount of details in the first review report shared by Dr. Deepak Garg. This report helped us in better understanding our role as Zonal Leader. We have been tasked to enhance our exposure, expertise and knowledge in the field of AI at the same time gainfully employ the knowledge in various projects that we undertake, participate in various competitions in the field of AI and also to solve our day to day life challenges and projects. We should aspire to convert our work/ projects in something useful, meaningful product for the Society to address the day to day problems.

One of the most important responsibility of Zonal Leader is to upgrade ourselves in the knowledge and expertise level in the field of AI, at the same time we have to share our learnings with a wider audience. This can be done by writing blogs, creating videos, forums, websites, writing research papers and so on. We should lead by examples and be the inspiration for others to peruse Artificial Intelligence as their carrier.

We have taken the first step towards this by forming 'AI club'. Faculty members & students from different departments are member of this club. We inaugurated this club on 8 th October 2018 and scheduled an 8 hour course on 'Fundamentals of Python' for students to spread the awareness of python among different branch students and staffs.

Our trustee Mr. Sunil Jadhav have guided us about the scope of AI, job opportunities in AI. After the motivational speech by our Hon Trustee, more and more students have shown interest in being part of the 'AI Club'. As part of the AI Club, we have successfully organised following events:

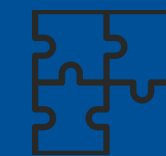
1. AI Debate



2. AI Quiz



3. AI Logic Builder



4. AI article writing in college technical festival 'enlGhtenment-18-19'.



The themes varied from purely technical ones to the socially relevant ones. Few of the key topics for the AI Debate and AI Article were

ARTIFICIAL INTELLIGENCE

-Tanmay pachpande[executive member]

WHAT IS AI?

“A SYSTEM’S ABILITY TO CORRECTLY INTERPRET EXTERNAL DATA, TO LEARN FROM SUCH DATA, AND TO USE THOSE LEARNINGS TO ACHIEVE SPECIFIC GOALS AND TASKS THROUGH FLEXIBLE ADAPTATION”

- AS DEFINED BY KAPLAN AND HAENLEIN

Artificial Intelligence in the work sector

According to a study by an audit firm ‘PwC’, over the next two decades Artificial Intelligence and its related work fields will introduce many more job opportunities than it is going to displace. While the impact of AI on every individual sector is set to vary, the research states that the number of people working in the employed sector is going to increase by approximately a million. However, the jobs in manufacturing can fall by a tragic 75 percent.



What are the applications?

ANALYZING HUGE AMOUNTS OF DATA REPEATEDLY IS PROVEN TO BE A TEDIOUS JOB. AI WILL HELP ALLEVIATE THE WORKLOAD REQUIRED BY APPLYING VARIOUS ALGORITHMS AND EXTRACTING MEANINGFUL INFORMATION FROM THE DATA. ANALYZING TESTS, X-RAYS, CT SCANS AND DATA ENTRY ARE ONLY A FEW OF THE APPLICATIONS OF AI

SENSE.LY DEVELOPED A DIGITAL NURSE THAT HELPS MONITOR THE PATIENT’S VITALS AND FOLLOW UP WITH TREATMENT. THE PROGRAM USES MACHINE LEARNING TO SUPPORT PATIENTS, SPECIALIZING IN CHRONIC ILLNESSES BY ACTING AS A ‘VIRTUAL NURSE’.

SUBSTANTIAL AMOUNT OF MONEY AND TIME IS SPENT IN THE CREATING OF PHARMACEUTICALS OVER THE WORLD. ATOMS WAS USED DURING THE EBOLA VIRUS SCARE TO SCAN EXISTING MEDICINES THAT COULD BE REDESIGNED TO FIGHT THE DISEASE. GENERALLY, A TASK WHICH WOULD’VE TAKEN MONTHS, TOOK A MEREDAY. IT MADE A DIFFERENCE, A DIFFERENCE THAT SAVED THOUSANDS OF LIVES.

MESSAGE FROM THE STUDENTS



MR. HRUSHIKESH SHUKLA

Ambassador
AI Club

Where we explore and develop our skills related to this field AI is the field in which we actually increase machine's intelligence and I'm happy and our college made me a part of such great club



ANIL CHOUDHARY

Jt. Ambassador
AI Club

AIClub, broadly interested in Artificial intelligence & Electronic. Artificial intelligence has the capacity to change the whole of computer world and enhance the quality of experience.. so come join us and be a part of this incredible change!!"



MISS. HEMANGI NALE

Ambassador
AI Club

"The person you want to become in next few year should be your idol, then only you'll be able to achieve your goal because its your own competition and our hard work has no limit until we decide to give up. So keep learning, exploring and share your knowledge. Even if your intelligence fails, your hard work will always work."



MR. SHAMSUNDHAR VAISHYA

Jt. Ambassador
AI Club

Put your intelligence to emphasize ur creativity and design intelligent agents to solve real world problems.
"Think intelligent act intelligent"

The background is a vibrant blue with various white and yellow icons related to artificial intelligence and technology. These include a brain with 'AI' inside, a lightbulb with a gear inside, a circuit board with 'AI' on it, a brain with circuitry, a Wi-Fi symbol, a neural network, a syringe, and a brain with circuitry. A large yellow rectangle is centered on the page, containing the text 'AI EVENTS OF SIGCE' in a bold, blue, serif font. A thin blue horizontal line is positioned below the text within the yellow rectangle.

AI EVENTS OF SIGCE

INTRODUCTION OF AI CLUB

Date and Time: 25/09/2018

SPEAKER:

Mr.Sunil Jadhav, Managing Trustee-SIGCE
Mr.V.P.Patil, Research member AI club
Mrs.Sarita Bopalkar, Research member AI club
Mrs.Ruchika Mishra, Research member AI club
Mr.Umakant Gohatre, Research member AI club
Mr.Chetan patil, Research member AI club

Smt.Indira Gandhi College of Engineering as a ZONAI LEAD PARTNER for Leading india.ai. has promoted the AI club among the students of SIGCE, and member of AI club delivered the lecture on awareness about AI and invited students to become a part of AI Club to enhance their research as well as development activities



**Mr.Sunil Jadhav and Mr.
V.P.Patil delivering the
speech on AI**

**Total Number of
Participant present :60**

PROJECT IDEAS AND JOB OPPORTUNITY IN THE AREA OF AI

Date: 26/09/2018



Mrs.Sarita Bopalkar and team member of AI club delivering the speech about Project ideas on AI

SPEAKER:

MR.V.P.PATIL

RESEARCH MEMBER AI CLUB

MRS.SARITA BOPALKAR

RESEARCH MEMBER AI CLUB

Smt. Indira Gandhi College of Engineering as a ZONAL LEAD PARTNER for Leading india.ai. has promoted the AI club among the students of SIGCE, and member of AI club delivered the lecture on project ideas about AI as well as job opportunity in upcoming years and invited students to become a part of AI Club to enhanced there research as well as leadership skills.

AI CLUB INAUGURATION

Date: 28/09/2018



CHIEF GUEST : **MRS.RUPALI PATIL**

Smt. Indira Gandhi College of engineering organized the AI Club, and it was inaugurated on 28/09/1999 in presence of our special guest Mrs. Rupali Patil. As Sigce is zonal head of india.ai all members delivered a short speech on research, development skills and opportunity in AI Club. Students Showed the positive response for the AI Club.76 students showed their interest in AI Club.

- To train the carious students
- To conduct various activities/various outreach activities
- To build up various research project base on AI

SPEAKER:

Mr.Sunil Jadhav,
Managing Trustee -SIGCE

Mr.V.P.Patil,
Research member AI club

Mrs.Sarita Bopalkar,
Research member AI club

Mrs.Ruchika Mishra ,
Research member AI club

Mr.Umakant Gohatre,

Research member AI club
Mr.Chetan patil,

Research member AI club

WORKSHOP ON PYTHON

28 SEPTEMBER 2018,



SPEAKER : MRS.RUPALI PATIL

Smt. Indira Gandhi college of engineering, Ghansoli organized a workshop on python under the AI club of sigce this event is held on 28-09-2018 in sigce college. as sigce became the zonal head for leading india.AI has inaugurated AI club in college and on this occasion AI club organized the 1st event as "Workshop on Python".

Guest fo honor on this special occasion Mrs. Rupali Patil spoke about the importance of python language in various fields.python is the most important language to study because of its breadth. the various queries the major advantage for its breadth. the various queries question answers discussed by Rupali Patil .40 students participated in the workshop. Lastly, college vice principle sir gave a vote of thanks of thanks and presented the award to the first two toppers in the python language test conducted ay the end of the event

AI EVENTS

15-16.OCT. 2018

Following events are conducted as a AI- Event.

CO-ORDINATORS:

Mr.V.P.Patil,

Research member AI club

Mrs.Sarita Bopalkar,

Research member AI club

Mrs.Ruchika Mishra ,

Research member AI club

Mr.Umakant Gohatre,

Research member AI club

Mr.Chetan patil,

Research member AI club

SR. No.	NAME	NO.OF PARTICIPANT
.1	AI-QUIZ	08
.2	AI-LOGIC BUILDING WORKSHOP COMPETITION	04
.3	AI- DEBATE	06
.4	AI-ARTICLE WRITING	05

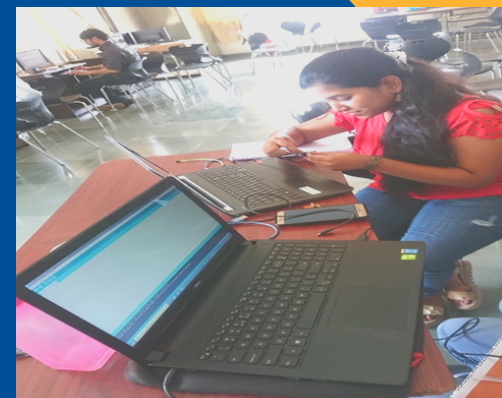


AI-QUIZ
COMPETITION
ROUND 2

AI-QUIZ
COMPETITION
ROUND 1



AI LOGIC BUILDING
WORKSHOP



AI LOGIC BUILDING
WORKSHOP



PRIZE DISTRIBUTION
OF DEBATE



PRIZE DISTRIBUTION
OF DEBATE



AI-QUIZ PRIZE
DISTRIBUTION

16.OCT. 2018

SEMINAR ON AI TECHNOLOGY AWARENESS



Mr.Sunil Jadhav Addressing the audience



SPEAKER :
MR.SUNIL JADHAV,
MANAGING DIRECTOR -SIGCE

Venue: Mahatma Gandhi Collge of
Agriculture Biotechnology,
Nanded,Maharashtra

GUEST LECTURE ON NEURAL NETWORK

04.DEC.2018

CO- ORDINATORS:

Mr.V.P.Patil,

Research member AI club

Mrs.Sarita Bopalkar,

Research member AI club

Mrs.Ruchika Mishra ,

Research member AI club

Mr.Umakant Gohatre,

Research member AI club

Mr.Chetan Patil,

Research member AI club



SPEAKER : DR.RAVINDRA DUCHE

SIGCE introduced the new club which is AI club. based on AI.SIGCE constructed the guest lecture on the topic of neural networks which is all about scientific study of nerves and their diseases .the moto behind this topic is the existing neurologist and the primanry physicn can improve patient care increase effency and cost effectiveness, apart from this other who are afraid of this can also come forward and which motivates others to come forward

FACULTY ACHIEVEMENT

- Prof.Chetan Patil successfully completed the 8 week online course by NPTEL (Initiatives from IIT)and Pass the examination while securing ELITE certificate in Sep-Oct 2018
- Prof.Sarita Bhopalkar successfully completed the 8 week online course by NPTEL (Initiatives from IIT) and Pass the examination while securing ELITE certificate in Sep-Oct 2018
- Prof.V.P.Patil, Prof.Umakant Gohatre, Prof.Chetan Patil attended the two days workshop on Artificial Intelligence organized by WAC at IIT Bombay in Nov 2018.
- Prof.V.P.Patil, Prof.Umakant Gohatre attended three days workshop on AI and Deep Learning Organized by Dr D.Y. Patil School of Engineering and Technology, Pune on 27-29 Dec 2018
- Prof.Sarita Bhopalkar attended 5 days workshop on AI and Deep Learning Organized by College of Engineering, Pune on 19-23 DEC 2018

**SMT.INDIRA GANDHI COLLEGE
OF ENGINEERING,GHANSOLI**
-Inspiration, Innovation and Discovery.



Thank You